

# ARCOLA BUS SALES

A Div. of Arcola Sales & Service Corp.

51 Kero Road

Carlstadt, N.J. 07072-2601

Tel: (201) 507-8500 Fax: (201) 507-5372

www.ArcolaSales.com

\*\*\*\*\*  
\*\*\*\*\* **VEHICLE SPEC** \*\*\*\*\*  
\*\*\*\*\*

Date: 03/01/11

Ref No.: 32997-STK000-HS

## CONFIGURED FOR:

*Middlesex Regional Ed. Serv. Comm.*

## VEHICLE TYPE:

New/Used: N  
Year: 2012  
Body Manuf: Collins  
Chassis: Chevrolet

D.R.W. 29 Pass. Collins Grand Bantam  
159"Wb 6.0ltr Gas Engine 14200 Gvwr 6 Row  
Cgx6 Stock Order

## DETAILED DESCRIPTION:

Item	Qn	Fleet Price
ITEM 3	1	41,560.00
STOCK # 32667	1	0.00
* COMPETITIVE ALLOWANCE	1	0.00
ADDL COMPETITIVE ALLOWANCE	1	0.00
CORE CHEV GRAND 6SEC 09	1	1,384.00
PRICE ADJ LEVEL2 CGX6	1	0.00
CHEV 159 6.0 14.2	1	2,047.00
GM GOVT PRICE CONCESSION	1	0.00
TILT STEERING	1	210.00
* FREIGHT FROM KS	1	0.00
AC 45K INWALL ACT CHEVY CS2	1	197.00
RADIO AM/FM/CD 4SPK CHEV	1	292.00
BUMPER 10" DRW EXH UNDER/SIDE	1	0.00
ENDCAPS GX FGLASS COL WARN LT	1	0.00
RUBRAIL SEAT LEVEL DRIVER DR	1	75.00
RUBRAILS FLOOR LEVEL GX6	1	0.00
RUBRAILS SEAT LEVEL GX6	1	0.00
RUBRAILS SKIRT GX6 AC	1	0.00
MUD FLAPS REAR GX	1	35.00
TOW HOOKS REAR	1	23.00
EXHAUST CHEV X6 UNDER/THRU	1	0.00
DOOR CONTROL MANUAL, 12 SWITCH MAX S/GX	1	37.00
DOOR ENTR GLASS TEMP H/S/GX	1	0.00
GRABRAIL LH ENTR 42IN BARR MNT	1	0.00
GRABRAIL RH ENTR 30IN	1	0.00
DOOR REAR EGRESS RHHINGE LX/HX	1	0.00
REAR DOOR HINGE 1PC STAINLESS	1	0.00
REAR DOOR LATCH 1PT	1	0.00

Item	Qn	Fleet Price
VANDAL LOCK REAR DOOR W/BUZZER	1	95.00
WNDW REAR DOOR LOWER TEMP CLR	1	0.00
WNDW REAR DOOR UPPER TEMP CLR	1	0.00
CIRCUIT BRKRS IN LIEU OF FUSES	1	117.00
INFO LABEL NJ CHAS MFG/PAS CAP	1	0.00
BATTERY NO BOX CHEV GAS	1	0.00
FLOOR COVER BLK OFFSET GX6	1	0.00
STEP TREAD L/H/S RIBBD BLK/WHT	1	0.00
* UNDERCOAT - FULL UNDERBODY N.J.	1	0.00
SUBFLOOR GX6 5/8 PLY MARINE	1	77.00
HEATER 50K FLR MOUNT CHEV	1	0.00
HEATER SHUT OFF VALVE-CABLE OP	1	0.00
INT PANELS LOWER EMB GALV X6	1	0.00
INT PANELS UPPER GX6 SMOOTH	1	0.00
PADDING PKG GX GRY FB	1	0.00
DOVE LTS THRU IGNITION	1	0.00
MONITOR 16LT LED WARN LIGHTS	1	162.00
PAINTED BLACK BORDER WARN LT	1	0.00
VISORS 8LT	1	0.00
WARN SYS 8LT MSTR/FT-WARN/CNCL	1	41.00
STROBE LIGHT PRE-WIRE	1	53.00
WARNING LAMPS 8LT HALOGEN SURF	1	0.00
CLEARANCE LIGHTS LED - LOW PROFILE	1	0.00
REVERSE LED WITH REAR DR OPEN	1	0.00
STOP/TAIL 7IN RED	1	0.00
STOP/TAIL/TURN 4IN FLUSH LED	1	0.00
TURN SIGNAL MIDBODY AMB FLUSH	1	0.00
TURN SIGNAL REAR 7IN AMBER	1	0.00
STORAGE COMP LINER GX 22x22x16	1	53.00
MIRROR INTERIOR 6X16 FLAT	1	0.00
MIRRORS, HEAT/RMT REAR & HEAT CROSS - ROSCO CS/CG	1	688.00
PAINT BODY EXT CHEV SX/GX YELL	1	0.00
PAINT ROOF WHITE	1	0.00
PAINT RUBRAILS NJ STYLE BLACK	1	0.00
"BATTERY" 2IN DECAL	1	0.00
LTRG/EMERG DR ARROW RED	1	0.00
EGRESS WINDOW SIGNAGE FMVSS/Y	2	0.00
BARRIER HB LH 45 MED GRAY FB	1	0.00
BARRIER HB RH 30 MED GRAY FB	1	0.00
* BACK-UP ALARM	1	0.00
BODY FLUID KIT #200-902 MULTI	1	60.00
CHILD ALERT CHILD-CHECKMATE	1	237.00
WRECKING BAR 30IN	1	0.00
STOP ARM INCND TS HI-REFL 6000 PLASTIC	1	120.00
HATCH TRAN 1975-004-111 1IN Y	2	0.00
CROSS ARM CHEV SPEC 68600 POLY	1	0.00
HOLDER MAGNET CROSS ARM #8100	1	100.00
ENDCAP "SCHOOL BUS" REFLECTIVE	1	0.00
* INSTALL SEAT TO FLOOR BOLT/NUT	12	0.00
SEAT HB LH 30 ASY MED GRAY FB	1	0.00
SEAT HB LH 45 ASY MED GRAY FB	4	0.00
SEAT HB LH 45 ASY MED GRAY FB	1	348.00
SEAT HB RH 30 ASY MED GRAY FB	5	0.00
SEAT HB RH 30 ASY MED GRAY FB	1	290.00
SEAT BELT 60IN BLACK CBC	10	0.00
SEAT BELT 60IN GRAY CBC	10	0.00

Item	Qn	Fleet Price
SEAT BELT 60IN RED CBC	4	0.00
SEAT BELTS - ADDITIONAL	5	85.00
INSTALL OEM HUB CAPS CHEV	1	0.00
WINDOW SASH TEMP 32% BLACK	1	0.00
WNDW EXIT LHVERT TEMP 32% BLK	1	0.00
WNDW EXIT RHVERT TEMP 32% BLK	1	0.00
WNDWS REAR BODY SX/GX TEMP CLR	1	0.00
25% DISCOUNT ON OPTIONS 6826	1	-1,706.50
Fire Extinguisher 5 lb.	1	0.00
First Aid Kit, Large - 24 Unit	1	0.00
Reflector Triangle Kit	1	0.00
Seat Belt Cutter	1	0.00
Lettering, NJ School - Std	1	0.00
Paint Grill Gray	1	0.00
Pre-Delivery Prep		0.00
Delivery		0.00
NJ School Inspection FEE (pd to State)		0.00
NJ School Inspection - Mech & Lift (plus NJISV)		0.00
** Documentation Charge - Clerical Exp		0.00
** DMV Messenger Charge		0.00
Title, N.J. w/ lien		0.00
Plates, NJ School S1 (>16p) - DMV Fee		0.00
		-----
	TOTAL PRICE	\$ 46,679.50
	Additional Discount	0.00
		-----
	NET SALES PRICE	46,679.50

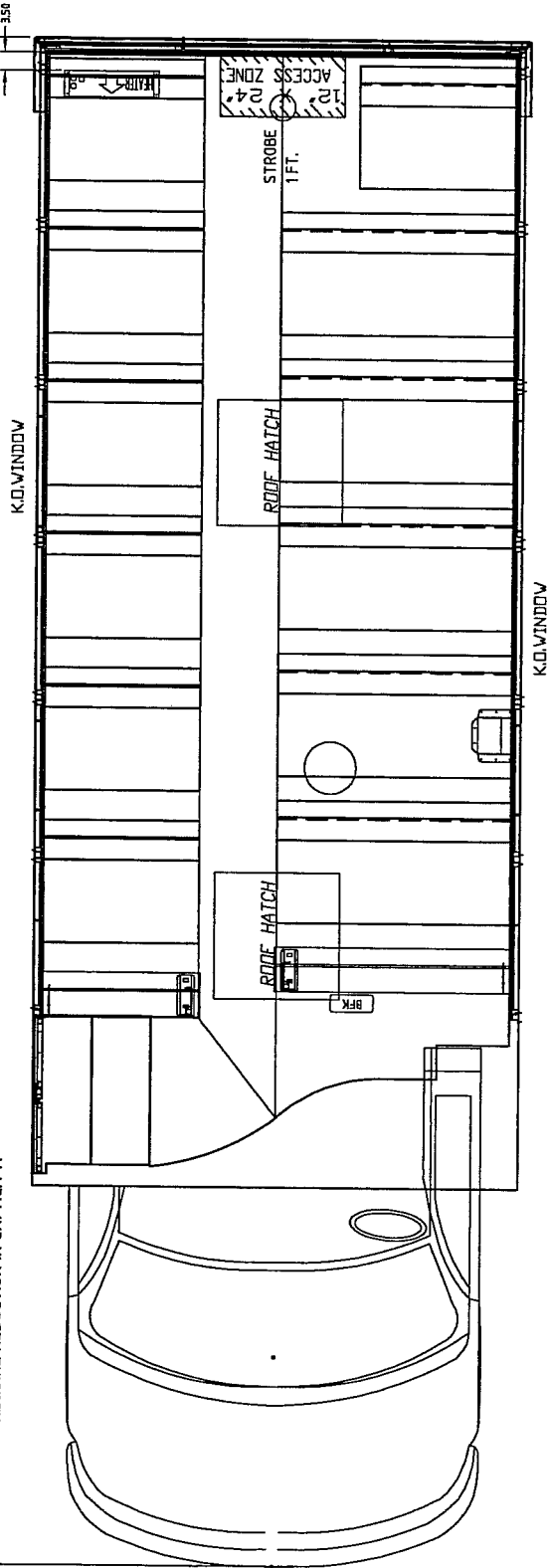
PROPOSED BY:

**House Account**  
Sales Consultant

Phone Extension: 0  
email: Sales@ArcolaSales.com

290.37  
BUMPER TO BUMPER

SEATING CONFIGURATION BASED ON ENGINEERING  
ESTIMATES. FINISH BUILT BUS WEIGHTS MAY  
REQUIRE REDUCTION IN CAPACITY.



CGX6

ARCOLA

29 Passengers

6 30 inch RH Seats at 25 inch Hip to Knee

5 45 inch & 130 inch LH Seats at 24 inch Hip to Knee

Approved By: *[Signature]* Date: *12/11/11*



COLLINS BUS CORP.  
P.O. BOX 2946  
HUTCHINSON, KS.  
67504-2946  
FORM: F-7.3.06 REVISION 0

THIS DRAWING AND ALL  
INFORMATION THEREON  
IS THE PROPERTY OF  
COLLINS IND. INC.

DRAWN BY DEL

DATE 01/10/11

TITLE CHEVY GRAND SB

DRAWING No. 48487-91CGX6-14G