

# ARCOLA BUS SALES

A Div. of Arcola Sales & Service Corp.

51 Kero Road

Carlstadt, N.J. 07072-2601

Tel: (201) 507-8500 Fax: (201) 507-5372

www.ArcolaSales.com

\*\*\*\*\*  
\*\*\*\*\* **BID PROPOSAL** \*\*\*\*\*  
\*\*\*\*\*

Date: 02 Mar 2011  
Ref No.: 32753-MID854-HS

## SUBMITTED TO:

*Mr. Patrick Moran Bus. Adm.  
Middlesex Regional Ed. Serv. Comm.  
1660 Stelton Road  
Piscataway, New Jersey 08854*

## VEHICLE TYPE:

New/Used: N  
Year: 2012  
Body Manuf: Collins  
Chassis: Chevrolet

Item 3 A - Type B, 24 Passenger Bus (D.R.W)  
5 Row, 6.0l Gas, 12,300 Gvwr, 139"Wb

## DETAILED DESCRIPTION:

Item	Qn
	1
C/A	1
CORE CHEV SUPER 5SEC 09	1
PRICE ADJ LEVEL2 CSX5	1
CHEVY DRW 139" 12300 6.0G AC/T	1
GM GOVT PRICE CONCESSION	1
* FREIGHT FROM KS	1
AC 40K INWALL CARR CHEV CM2	1
BUMPER 10" DRW EXH UNDER/SIDE	1
ENDCAPS SX FGLASS COL WARN LT	1
RUBRAILS FLOOR LEVEL SX58	1
RUBRAILS SEAT LEVEL SX58	1
RUBRAILS SKIRT L/H/SX5 AC	1
* UNDERCOAT - FULL UNDERBODY N.J.	1
EXHAUST CHEV X4/X5 UNDR BUMPER	1
DOOR CONTROL MANUAL, 5 SWITCH MAX S/GX	1
DOOR ENTR GLASS TEMP H/S/GX	1
GRABRAIL LH ENTR 42IN BARR MNT	1
GRABRAIL RH ENTR 30IN	1
DOOR REAR EGRESS RHHINGE SX/GX	1
REAR DOOR HINGE 1PC STAINLESS	1
REAR DOOR LATCH 1PT	1
WNDW REAR DOOR LOWER TEMP CLR	1
WNDW REAR DOOR UPPER TEMP CLR	1
BATTERY NO BOX CHEV GAS	1
FLOOR COVER BLK OFFSET S/GX5	1
STEP TREAD L/H/S RIBBD BLK/WHT	1
SUBFLOOR SX58 1/2 PLY	1

Item	Qn
HEATER 50K FLR MOUNT CHEV	1
HEATER SHUT OFF VALVE-CABLE OP	1
INT PANELS LOWER EMB GALV X5	1
INT PANELS UPPER SX58 SMOOTH	1
PADDING PKG SX GRY FB	1
DOVE LTS THRU IGNITION	1
MONITOR STOP LIGHT/DSH MOUNTED	1
MONITOR 8LT AEROFLASH	1
PAINTED BLACK BORDER WARN LT	1
VISORS 8LT	1
WARNING SYS 8LT MSTR/WARN/CNCL	1
WARNING LAMPS 8LT HALOGEN SURF	1
CLEARANCE LIGHTS LED - LOW PROFILE	1
REVERSE LED WITH REAR DR OPEN	1
STOP/TAIL 7IN RED	1
STOP/TAIL/TURN 4IN FLUSH LED	1
TURN SIGNAL MIDBODY AMB FLUSH	1
TURN SIGNAL REAR 7IN AMBER	1
MIRROR INTERIOR 6X16 FLAT	1
MIRRORS, REAR & CROSS - ROSCO CS/CG	1
PAINT BODY EXT CHEV SX/GX YELL	1
PAINT ROOF WHITE	1
PAINT RUBRAILS NJ STYLE BLACK	1
LTRG/EMERG DR ARROW RED	1
EGRESS WINDOW SIGNAGE FMVSS/Y	2
BARRIER HB LH 45 MED GRAY FB	1
BARRIER HB RH 30 MED GRAY FB	1
* BACK-UP ALARM	1
WRECKING BAR 30IN	1
STOP ARM INCND TS REFL 6000	1
HATCH TRAN 1975-004-111 1IN Y	2
CROSS ARM CHEV SPEC 68600 POLY	1
ENDCAP "SCHOOL BUS" REFLECTIVE	1
* INSTALL SEAT TO FLOOR BOLT/NUT	10
SEAT HB LH 30 ASY MED GRAY FB	1
SEAT HB LH 45 ASY MED GRAY FB	4
SEAT HB RH 30 ASY MED GRAY FB	5
SEAT BELT 60IN BLACK CBC	10
SEAT BELT 60IN GRAY CBC	10
SEAT BELT 60IN RED CBC	4
INSTALL OEM HUB CAPS CHEV	1
WINDOW SASH TEMP 32% BLACK	10
WNDW EXIT LHVERT TEMP 32% BLK	1
WNDW EXIT RHVERT TEMP 32% BLK	1
WNDWS REAR BODY SX/GX TEMP CLR	1
FIRE EXT 5LB 10ABC FRONT MNT	1
FIRST AID KIT #202-126 NJ	1
TRIANGLE WARNING REFLECTORS 3	1
SEAT BELT CUTTER	1
LETTERBELT 5IN DECAL	1
NUMBER BELT 5IN DECAL	1
"BATTERY" 2IN DECAL	1
PAINT CHASSIS GRILL GRAY	1

Pre-Delivery Prep

Delivery  
NJ School Inspection FEE (pd to State)  
NJ School Inspection - Mech & Lift (plus NJISV)

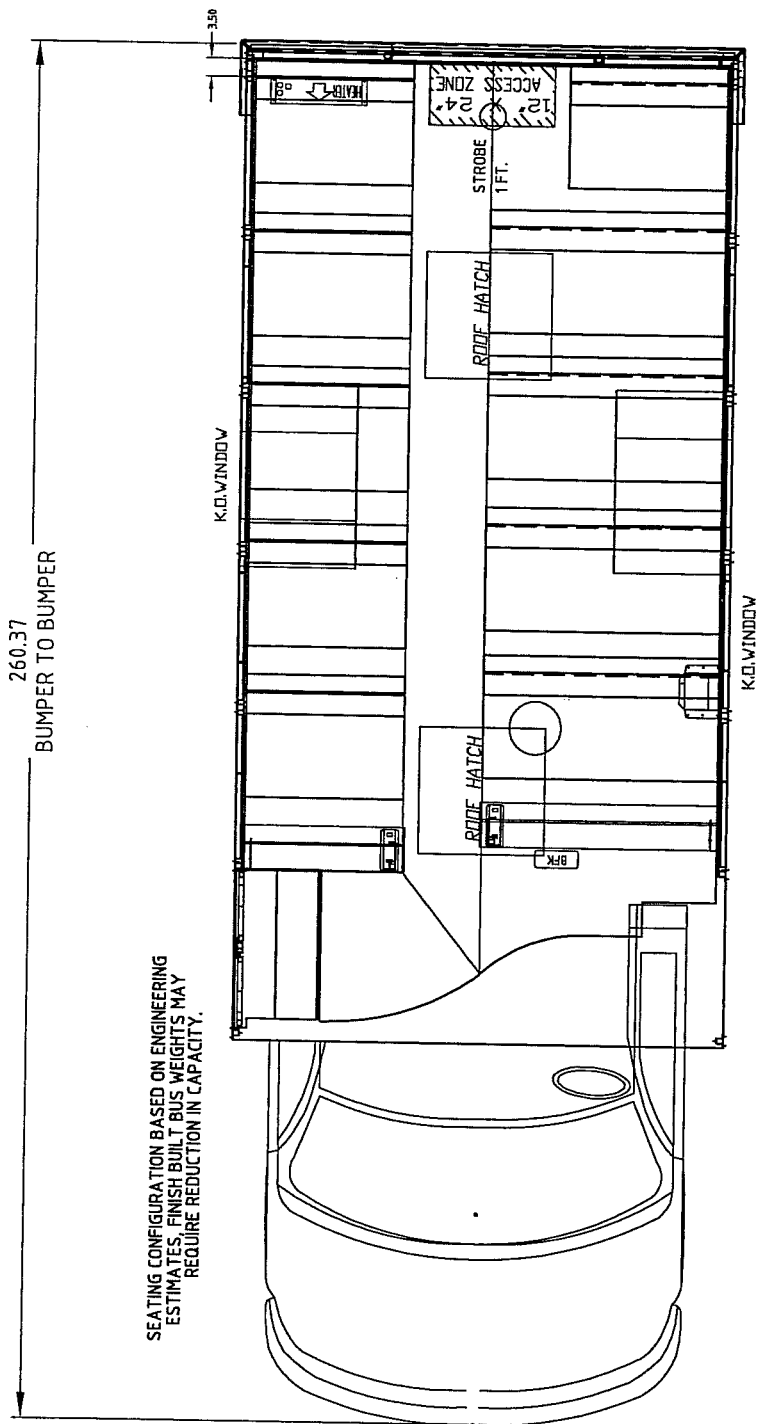
\*\* Documentation Charge - Clerical Exp  
\*\* DMV Messenger Charge  
Title, N.J. (no lien)  
Plates, NJ School SI (>16p) - DMV Fee

**PRICE PER VEHICLE: \$ 41,380.00**

**PROPOSED BY:**


***House Account***  
*Account Manager*

*Phone Extension: 0*  
*email: Sales@ArcolaSales.com*



CSX5  
 ARCOLA  
 24 Passengers  
 5 30 inch RH Seats at 25 inch Hip to Knee  
 4 45 inch & 1 30 inch LH Seats at 24 inch Hip to Knee

Approved By: JK Date: 1/21/11

 COLLINS BUS CORP. P.O. BOX 2946 HUTCHINSON, KS 67504-2946 FORM: F-7.3.06 REVISION 0	THIS DRAWING AND ALL INFORMATION THEREON IS THE PROPERTY OF COLLINS IND. INC.		DRAWN BY DEL
	DATE 01/07/11		DRAWING NO. 48474-78CSX5-13G
TITLE CHEVY SUPER SB			